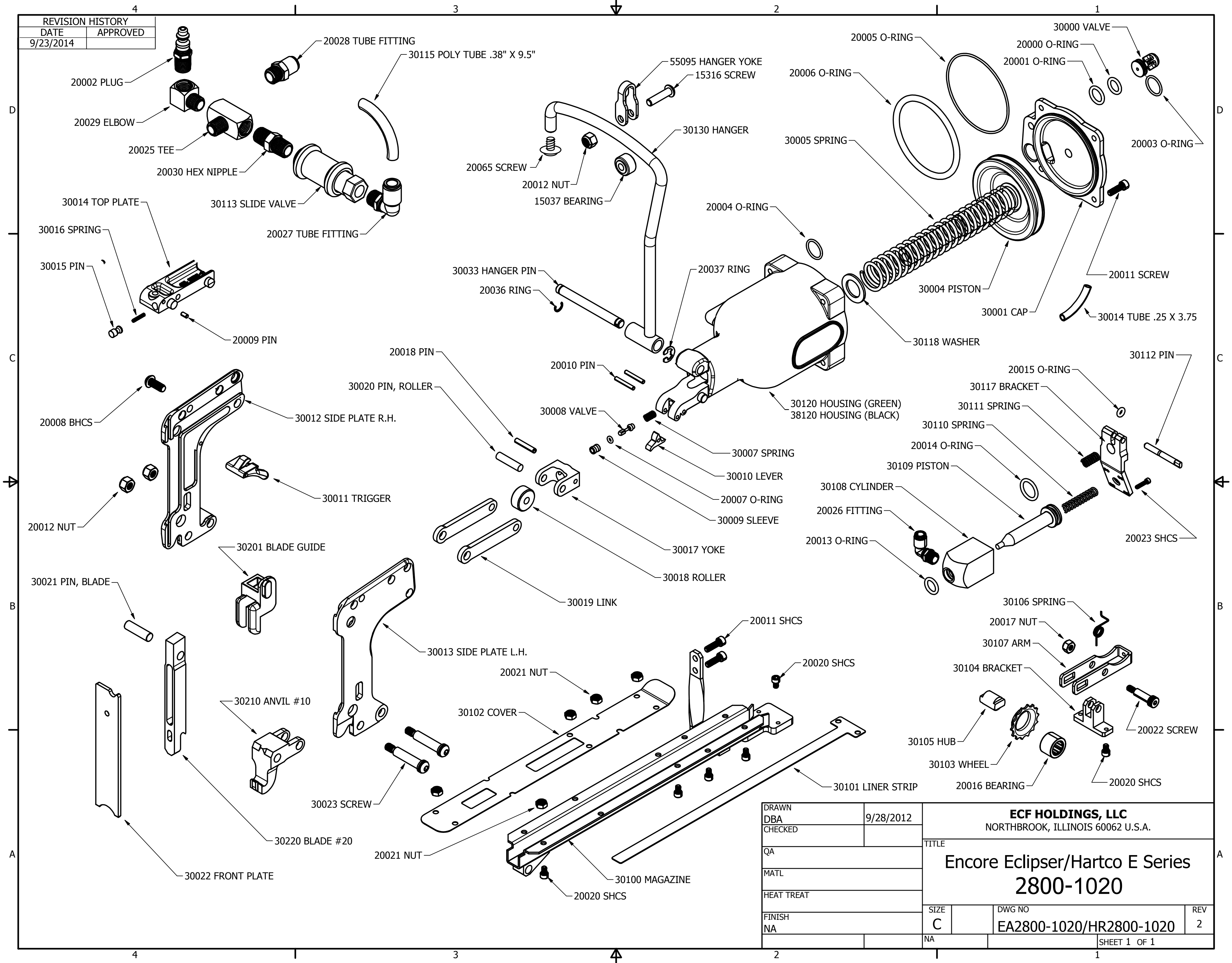


| REVISION HISTORY | |
|------------------|----------|
| DATE | APPROVED |
| 9/23/2014 | |



| | |
|------------|-----------|
| DRAWN | 9/28/2012 |
| DBA | |
| CHECKED | |
| QA | |
| MATL | |
| HEAT TREAT | |
| FINISH | |
| NA | |

| | | | |
|---|-------------------------|-----|--|
| ECF HOLDINGS, LLC NORTHBROOK, ILLINOIS 60062 U.S.A. | | | |
| TITLE Encore Eclipser/Hartco E Series 2800-1020 | | | |
| SIZE | DWG NO | REV | |
| C | EA2800-1020/HR2800-1020 | 2 | |
| NA | SHEET 1 OF 1 | | |

| TOOL MODEL: Encore Eclipser/Hartco "E" Series | | | | | | PRODUCT NUMBER: | | | | | |
|--|-------------|------------------------------|-----------------|--|-------------|--------------------------------|---------------------------------------|-----------------|----------------|--|--|
| 2800-1020 | | | | | | EA2800-1020/HR2800-1020 | | | | | |
| Item Number | Description | Qty | Weight (ounces) | Weight (grams) | Item Number | Description | Qty | Weight (ounces) | Weight (grams) | | |
| 1 | 15037 | Bearing | 1 | | 42 | 30010 | Trigger Lever | 1 | | | |
| 2 | 15316 | Screw | 1 | | 43 | 30011 | Trigger Assy. | 1 | | | |
| 3 | 20000 | O-Ring | 1 | | 44 | 30012 | Side Plate, Right Hand | 1 | | | |
| 4 | 20001 | O-Ring | 1 | | 45 | 30013 | Side Plate, Left Hand | 1 | | | |
| 5 | 20002 | Plug | 1 | | 46 | 30014 | Top Plate | 1 | | | |
| 6 | 20003 | O-Ring | 1 | | 47 | 30015 | Pin | 1 | | | |
| 7 | 20004 | O-Ring | 1 | | 48 | 30016 | Spring, Top Plate Pin | 1 | | | |
| 8 | 20005 | O-Ring | 1 | | 49 | 30017 | Yoke | 1 | | | |
| 9 | 20006 | O-Ring | 1 | | 50 | 30018 | Roller | 1 | | | |
| 10 | 20007 | O-Ring | 1 | | 51 | 30019 | Link | 2 | | | |
| 11 | 20008 | BHCS (Button Head Cap Screw) | 1 | | 52 | 30020 | Pin, Roller | 1 | | | |
| 12 | 20009 | Dowel Pin | 1 | | 53 | 30021 | Pin, Blade | 1 | | | |
| 13 | 20010 | Dowel Pin | 2 | | 54 | 30022 | Front Plate | 1 | | | |
| 14 | 20011 | SHCS (Socket Head Cap Screw) | 6 | | 55 | 30023 | Bolt | 2 | | | |
| 15 | 20012 | Nut | 3 | | 56 | 30033 | Hanger Pin | 1 | | | |
| 16 | 20013 | O-Ring | 1 | | 57 | 30100 | Magazine | 1 | | | |
| 17 | 20014 | O-Ring | 1 | | 58 | 30101 | Liner Strip | 1 | | | |
| 18 | 20015 | O-Ring | 1 | | 59 | 30102 | Cover | 1 | | | |
| 19 | 20016 | Bearing | 1 | | 60 | 30103 | Wheel | 1 | | | |
| 20 | 20017 | Nut | 1 | | 61 | 30104 | Bracket | 1 | | | |
| 21 | 20018 | Dowel Pin | 1 | | 62 | 30105 | Hub | 1 | | | |
| 22 | 20020 | SHCS (Socket Head Cap Screw) | 12 | | 63 | 30106 | Spring | 1 | | | |
| 23 | 20021 | Nut | 8 | | 64 | 30107 | Arm | 1 | | | |
| 24 | 20022 | Screw | 1 | | 65 | 30108 | Cylinder | 1 | | | |
| 25 | 20023 | SHCS (Socket Head Cap Screw) | 4 | | 66 | 30109 | Piston | 1 | | | |
| 26 | 20025 | Tee | 1 | | 67 | 30110 | Spring | 1 | | | |
| 27 | 20026 | Fitting | 1 | | 68 | 30111 | Spring | 1 | | | |
| 28 | 20027 | Tube Fitting | 1 | | 69 | 30112 | Pin | 1 | | | |
| 29 | 20028 | Tube Fitting | 1 | | 70 | 30113 | Slide Valve | 1 | | | |
| 30 | 20029 | Elbow | 1 | | 71 | 30114 | Tube (.25" x 3.75") | 1 | | | |
| 31 | 20030 | Hex Nipple | 1 | | 72 | 30115 | Poly Tube (.38" x 9.5") | 1 | | | |
| 32 | 20036 | Ring | 1 | | 73 | 30117 | Bracket | 1 | | | |
| 33 | 20037 | Ring | 1 | | 74 | 30120 38120 | Housing, -w- oval label inset: | | | | |
| 34 | 20065 | 1/4-20 x 3/8" Flange Head | 1 | GREEN Encore, OR BLACK Hartco | | | 1 | | | | |
| 35 | 30000 | Valve | 1 | | 75 | 30130 | Hanger | 1 | | | |
| 36 | 30001 | Cap | 1 | | 76 | 30201 | Blade Guide, #1 | 1 | | | |
| 37 | 30004 | Piston Assy. | 1 | | 77 | 30210 | Anvil #10 | 1 | | | |
| 38 | 30005 | Compression Spring | 1 | | 78 | 30220 | Blade #20 | 1 | | | |
| 39 | 30007 | Spring | 1 | | 79 | 55095 | Hanger Yoke | 1 | | | |
| 40 | 30008 | Trigger Valve | 1 | | | | | | | | |
| 41 | 30009 | Valve Sleeve | 1 | | | | | | | | |
| | | | | | | | | | | | |
| SUBTOTAL | | 70 | | | SUBTOTAL | | 40 | | | | |
| Total Bill of Materials | | | | | | | 110 | 6.7 lbs | 3.1 kg | | |

BHCS = Button Head Cap Screw; SHCS = Socket Head Cap Screw

= Hanger Parts

= Blade Jam Release Parts