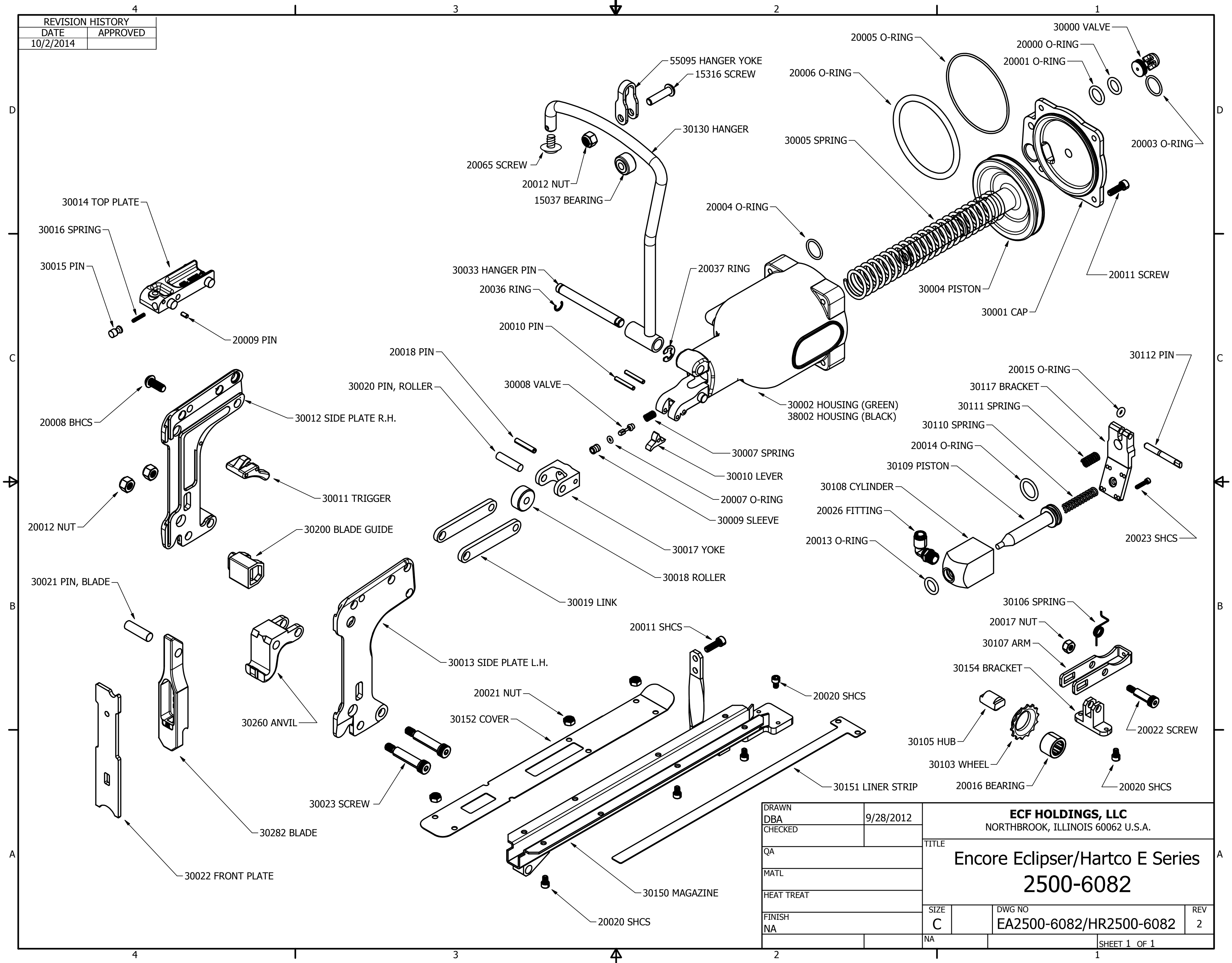


REVISION HISTORY	
DATE	APPROVED
10/2/2014	

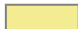


DRAWN	9/28/2012
DBA	
CHECKED	
QA	
MATL	
HEAT TREAT	
FINISH	
NA	

<b>ECF HOLDINGS, LLC</b> NORTHBROOK, ILLINOIS 60062 U.S.A.	
TITLE <b>Encore Eclipser/Hartco E Series 2500-6082</b>	
SIZE C	DWG NO EA2500-6082/HR2500-6082
REV 2	
SHEET 1 OF 1	

TOOL MODEL: <b>Encore Eclipser/Hartco "E" Series</b>						PRODUCT NUMBER:					
<b>2500-6082</b>						<b>EA2500-6082/HR2500-6082</b>					
	Item Number	Description	Qty	Weight (ounces)	Weight (grams)		Item Number	Description	Qty	Weight (ounces)	Weight (grams)
1	15037	Bearing	1			35	30008	Trigger Valve	1		
2	15316	Screw	1			36	30009	Valve Sleeve	1		
3	20000	O-Ring	1			37	30010	Trigger Lever	1		
4	20001	O-Ring	1			38	30011	Trigger Assy.	1		
5	20003	O-Ring	1			39	30012	Side Plate, Right Hand	1		
6	20004	O-Ring	1			40	30013	Side Plate, Left Hand	1		
7	20005	O-Ring	1			41	30014	Top Plate	1		
8	20006	O-Ring	1			42	30015	Pin	1		
9	20007	O-Ring	1			43	30016	Spring, Top Plate Pin	1		
10	20008	BHCS	1			44	30017	Yoke	1		
11	20009	Dowel Pin	1			45	30018	Roller	1		
12	20010	Dowel Pin	2			46	30019	Link	2		
13	20011	SHCS	6			47	30020	Pin, Roller	1		
14	20012	Nut	3			48	30021	Pin, Blade	1		
15	20013	O-Ring	1			49	30022	Front Plate	1		
16	20014	O-Ring	1			50	30023	Shoulder Screw	2		
17	20015	O-Ring	1			51	30033	Hanger Pin	1		
18	20016	Bearing	1			52	30100	Magazine	1		
19	20017	Nut	1			53	30103	Wheel	1		
20	20018	Dowel Pin	1			54	30105	Hub	1		
21	20020	SHCS	10			55	30106	Spring	1		
22	20021	Nut	6			56	30107	Arm	1		
23	20022	Shoulder Screw	1			57	30108	Cylinder	1		
24	20023	SHCS	4			58	30109	Piston	1		
25	20026	Fitting	1			59	30110	Spring	1		
26	20036	Ring	1			60	30111	Spring	1		
27	20037	Ring	1			61	30112	PIN	1		
28	20065	1/4-20 3/8" Flange Head	1			62	30117	Bracket	1		
29	30000	Valve	1			63	30130	Hanger	1		
30	30001	Cap	1			64	30150	Magazine	1		
31	30002 38002	<b>Housing, -w- oval label inset:</b>				65	30151	Liner Strip	1		
		<b>GREEN</b> Encore, OR <b>BLACK</b> Hartco	1			66	30152	Cover	1		
32	30004	Piston Assy.	1			67	30154	Bracket	1		
33	30005	Compression Spring	1			67	30200	Blade Guide, #0	1		
34	30007	Spring	1			68	30260	Anvil #60	1		
						69	30282	Blade #82	1		
						70	55095	Hanger Yoke	1		
SUBTOTAL			59			SUBTOTAL			39		
<b>Total Bill of Materials</b>									<b>98</b>	<b>6.0 lbs</b>	<b>2.8 kg</b>

BHCS = Button Head Cap Screw; SHCS = Socket Head Cap Screw

 = Hanger Parts