

4

3

2

1

REVISION HISTORY

ZONE	REV	DESCRIPTION	DATE	APPROVED
3A	1	note added	10/2/2014	

D

D

C

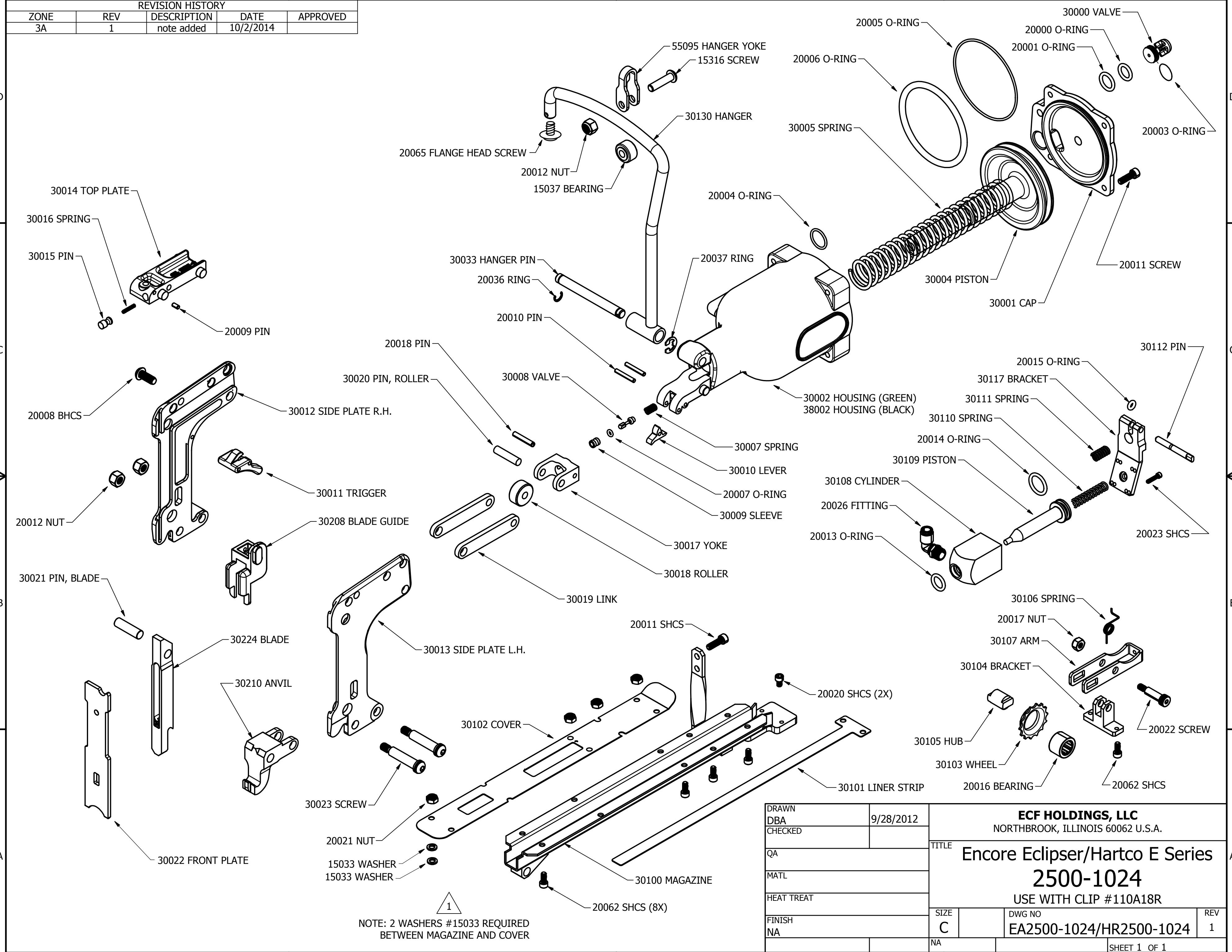
C

B

B

A


A



NOTE: 2 WASHERS #15033 REQUIRED BETWEEN MAGAZINE AND COVER

DRAWN	9/28/2012	ECF HOLDINGS, LLC NORTHBROOK, ILLINOIS 60062 U.S.A.	
DBA			
CHECKED		TITLE	
QA		Encore Eclipser/Hartco E Series	
MATL		2500-1024	
HEAT TREAT		USE WITH CLIP #110A18R	
FINISH		SIZE	DWG NO
NA		C	EA2500-1024/HR2500-1024
		NA	REV
			1
		SHEET 1 OF 1	

TOOL MODEL: Encore Eclipser/Hartco "E" Series						PRODUCT NUMBER:					
2500-1024						EA2500-1024/HR2500-1024					
USE WITH CLIP #110A18R											
	Item Number	Description	Qty	Weight (ounces)	Weight (grams)		Item Number	Description	Qty	Weight (ounces)	Weight (grams)
1	15033	Washer	16			35	30007	Spring	1		
2	15037	Bearing	1			36	30008	Trigger Valve	1		
3	15316	Screw	1			37	30009	Valve Sleeve	1		
4	20000	O-Ring	1			38	30010	Trigger Lever	1		
5	20001	O-Ring	1			39	30011	Trigger Assy.	1		
6	20003	O-Ring	1			40	30012	Side Plate, Right Hand	1		
7	20004	O-Ring	1			41	30013	Side Plate, Left Hand	1		
8	20005	O-Ring	1			42	30014	Top Plate	1		
9	20006	O-Ring	1			43	30015	Pin	1		
10	20007	O-Ring	1			44	30016	Spring, Top Plate Pin	1		
11	20008	BHCS	1			45	30017	Yoke	1		
12	20009	Dowel Pin	1			46	30018	Roller	1		
13	20010	Dowel Pin	2			47	30019	Link	2		
14	20011	SHCS	6			48	30020	Pin, Roller	1		
15	20012	Nut	3			49	30021	Pin, Blade	1		
16	20013	O-Ring	1			50	30022	Front Plate	1		
17	20014	O-Ring	1			51	30023	Shoulder Screw	2		
18	20015	O-Ring	1			52	30033	Hanger Pin	1		
19	20016	Bearing	1			53	30100	Magazine	1		
20	20017	Nut	1			54	30101	Liner Strip	1		
21	20018	Dowel Pin	1			55	30102	Cover	1		
22	20020	SHCS	2			56	30103	Wheel	1		
23	20021	Nut	8			57	30104	Bracket	1		
24	20022	Shoulder Screw	1			58	30105	Hub	1		
25	20023	SHCS	4			59	30106	Spring	1		
26	20026	Fitting	1			60	30107	Arm	1		
27	20036	Ring	1			61	30108	Cylinder	1		
28	20037	Ring	1			62	30109	Piston	1		
29	20062	SHCS	10			63	30110	Spring	1		
29	20065	1/4-20 3/8" Flange Head	1			64	30111	Spring	1		
30	30000	Valve	1			65	30112	PIN	1		
31	30001	Cap	1			66	30117	Bracket	1		
32	30002 38002	Housing, -w- oval label inset:				67	30130	Hanger	1		
		GREEN Encore, OR BLACK Hartco	1			68	30208	Blade Guide, #8	1		
33	30004	Piston Assy.	1			69	30210	Anvil #10	1		
34	30005	Compression Spring	1			70	30224	Blade #24	1		
						71	55095	Hanger Yoke	1		
SUBTOTAL			78			SUBTOTAL			39		
Total Bill of Materials									117	6.0 lbs	2.8 kg

BHCS = Button Head Cap Screw; SHCS = Socket Head Cap Screw
 = Hanger Parts