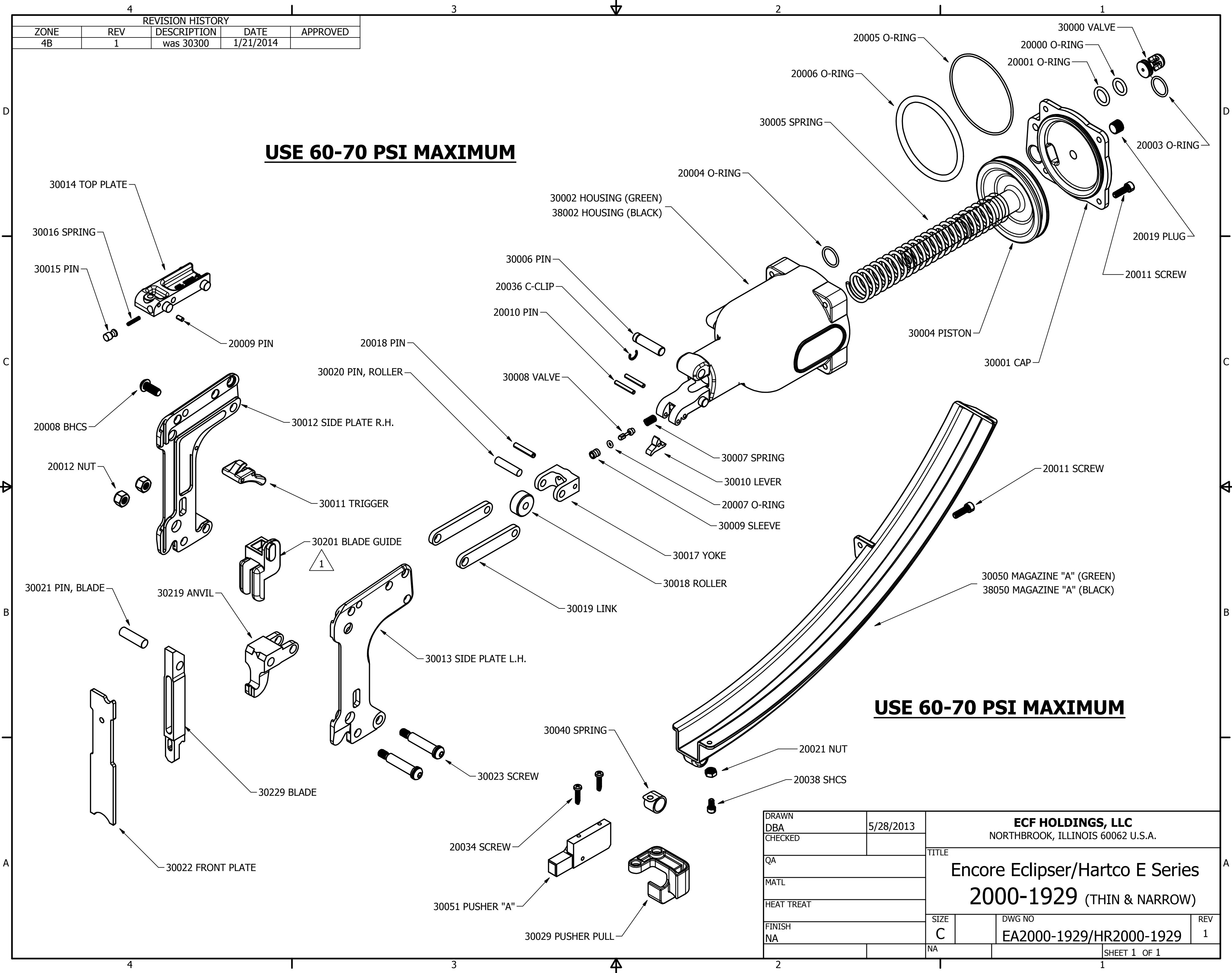


REVISION HISTORY				
ZONE	REV	DESCRIPTION	DATE	APPROVED
4B	1	was 30300	1/21/2014	

USE 60-70 PSI MAXIMUM

USE 60-70 PSI MAXIMUM



DRAWN	5/28/2013	ECF HOLDINGS, LLC NORTHBROOK, ILLINOIS 60062 U.S.A.		
DBA				
CHECKED		TITLE		
QA		Encore Eclipser/Hartco E Series		
MATL		2000-1929 (THIN & NARROW)		
HEAT TREAT		SIZE	DWG NO	REV
FINISH		C	EA2000-1929/HR2000-1929	1
NA		NA	SHEET 1 OF 1	

TOOL MODEL:		Encore Eclipser/Hartco "E" Series			PRODUCT NUMBER:	
		2000-1929 (Thin & Narrow)			EA2000-1929/HR2000-1929	
	Item Number	Description	Qty	U/M	Weight (ounces)	Weight (grams)
1	20000	O-Ring	1			
2	20001	O-Ring	1			
3	20003	O-Ring	1			
4	20004	O-Ring	1			
5	20005	O-Ring	1			
6	20006	O-Ring	1			
7	20007	O-Ring	1			
8	20008	BHCS (Button Head Cap Screw)	1			
9	20009	Dowel Pin	1			
10	20010	Dowel Pin	2			
11	20011	SHCS (Socket Head Cap Screw)	6			
12	20012	Nut	2			
13	20018	Dowel Pin	1			
14	20019	Plug	1			
15	20021	Nut	1			
16	20034	Screw	2			
17	20036	C-Clip	1			
18	20038	SHCS (Socket Head Cap Screw)	1			
19	30000	Valve	1			
20	30001	Cap	1			
21	30002 38002	Housing -w- oval label inset, GREEN Encore, OR Housing -w- oval label inset, BLACK Hartco	1			
22	30004	Piston Assy.	1			
23	30005	Compression Spring	1			
24	30006	PIN	1			
25	30007	Spring	1			
26	30008	Trigger Valve	1			
27	30009	Valve Sleeve	1			
28	30010	Trigger Lever	1			
29	30011	Trigger Assy.	1			
30	30012	Side Plate, Right Hand	1			
31	30013	Side Plate, Left Hand	1			
32	30014	Top Plate	1			
33	30015	Pin	1			
34	30016	Spring, Top Plate Pin	1			
35	30017	Yoke	1			
36	30018	Roller	1			
37	30019	Link	2			
38	30020	Pin, Roller	1			
39	30021	Pin, Blade	1			
40	30022	Front Plate	1			
41	30023	Shoulder Screw	2			
42	30029	Pusher Pull	1			
43	30040	Spring (Equivalent to HR55040)	1			
44	30050 38050	Magazine -w- Cover "A", GREEN Encore, OR Magazine -w- Cover "A", BLACK Hartco	1			
45	30051	Pusher -w- Latch "A" Clips	1			
46	30201	Blade Guide, #1	1			
47	30219	Anvil #19	1			
48	30229	Blade #29	1			
Total Bill of Materials			58		4.4 lbs	2.0 kgs