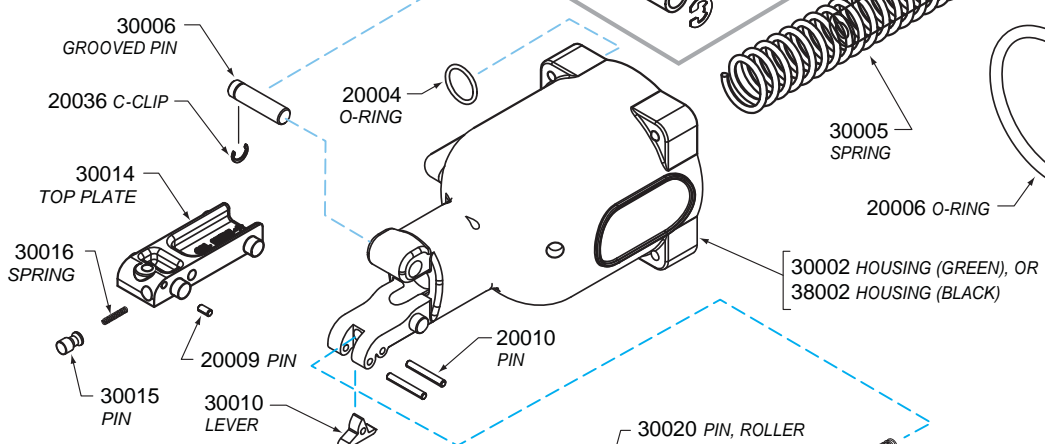
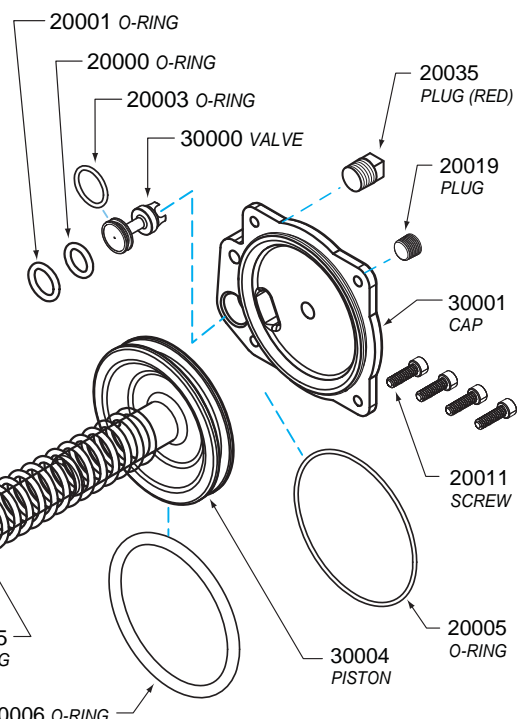
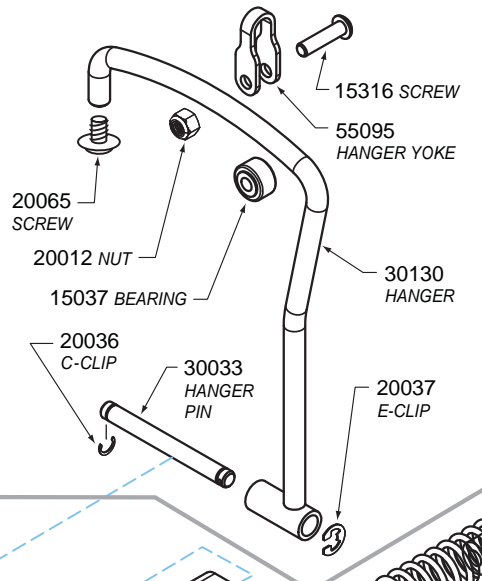


The Eclipser 2000 Series

PARTS for Optional HANGER ASSEMBLY

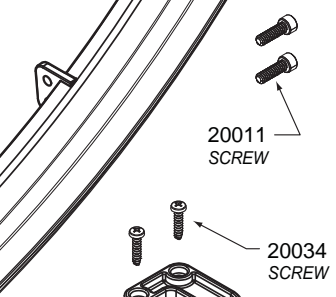
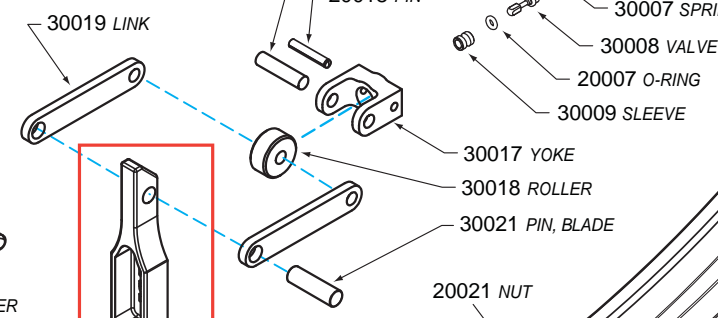
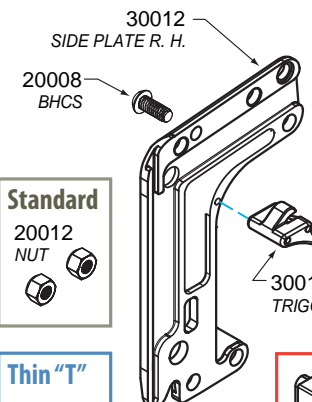
Item #	Description	Qty
30131	Hanger Assembly	1
15037	Bearing	1
15316	Screw	1
20012	Nut	1
20036	C-Clip	1
20037	E-Clip	1
20065	1/4-20 3/8" Flange Head	1
30033	Hanger Pin	1
30130	Hanger	1
55095	Hanger Yoke	1



MAGAZINE

300___ (GREEN)

380___ (BLACK)



Standard

20012 NUT

Thin "T"

20037 E-CLIP

BLADE GUIDE

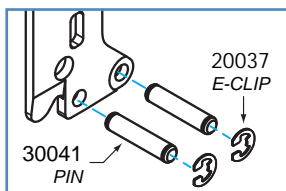
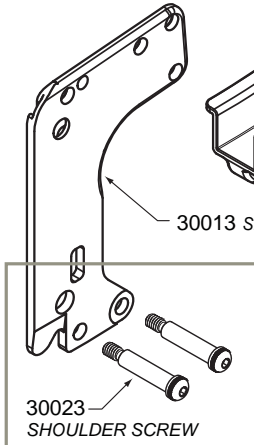
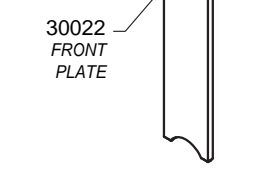
302___

ANVIL

302___

PUSHER

300___



TROUBLE SHOOTING

SAFETY	CAUSE	SOLUTION
Blade does not return	Sticky main valve	Lubricate main valve and check that main valve piston moves
	Loose screw in housing cap	Tighten all 4 screws in cap
Sluggish tool	Dry main valve	Lubricate main valve
Clips not feeding	Obstruction in magazine	Remove obstruction
	Broken pusher spring	Replace pusher spring
Loose clips	Low air pressure	Increase pressure to 80 psi
	Worn blade or anvil	Replace blade or anvil
Clip jamming	Clips are loaded backward into the magazine	Reorient strip so that single ear on clip is loaded forward
Tool not cycling	Clogged trigger valve	Clean trigger valve assembly

SPECIFICATIONS

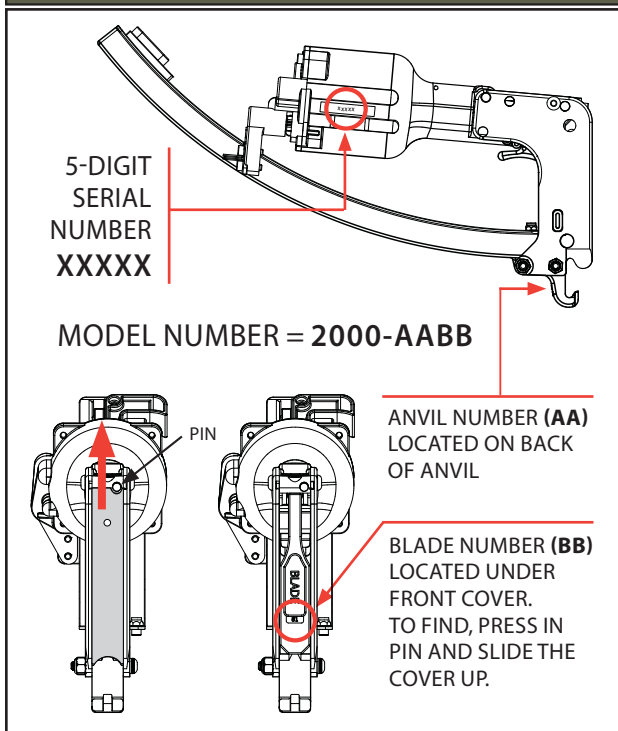
WEIGHT:	4.4 lbs (2.0 kg)
DIMENSIONS:	16.5" x 7" x 4" (419.1 x 177.8 x 101.6mm)
COMPONENT MATERIALS:	Composite plastic housing and clip magazine
CLIP FEEDING METHOD:	Constant force spring
PRIMARY POWER UNIT:	Main cylinder - Bore 3.06" (78mm) spring return
AIR SUPPLY:	80-90 psi (5.5-6.2 bars) of dry, lubricated air
AIR CONSUMPTION (SCFM):	3.56, assuming 90 psi and 1 cycle per second 3.22, assuming 80 psi and 1 cycle per second

2000 Series UNIVERSAL PARTS

Item #	Description	Qty	Item #	Description	Qty
20000	O-Ring	1	30008	Trigger Valve	1
20001	O-Ring	1	30009	Valve Sleeve	1
20003	O-Ring	1	30010	Trigger Lever	1
20004	O-Ring	1	30011	Trigger Assy.	1
20005	O-Ring	1	30012	Side Plate, Right Hand	1
20006	O-Ring	1	30013	Side Plate, Left Hand	1
20007	O-Ring	1	30014	Top Plate	1
20008	BHCS, 1/4-20 x 5/8" w/patch	2	30015	Pin	1
20009	Dowel Pin	1	30016	Spring, Top Plate Pin	1
20010	Dowel Pin	2	30017	Yoke	1
20011	SHCS, 10-24 x 5/8"	6	30018	Roller	1
20012	Nut*	2	30019	Link	2
20018	Dowel Pin	1	30020	Pin, Roller	1
20019	Plug	1	30021	Pin, Blade	1
20021	Nut	1	30022	Front Plate	1
20034	Screw	2	30023	Shoulder Screw*	2
20036	C-Clip	1	30029	Pusher Pull	1
20035	Plug (Red)	1	30040	Spring (Equiv. to HR55040)	1
20037	E-Clip*	4	30041	Pin*	2
20038	SHCS, 8-32 x 5/16"	1	The following parts are MODEL SPECIFIC. See chart at right for those part numbers.		
30000	Valve	1			
30001	Cap	1	300__	Magazine, GREEN Encore	1
38002	Housing, BLACK Hartco	1	380__	Magazine, BLACK Hartco	
30004	Piston Assy.	1	300__	Pusher -w- Latch	1
30005	Compression Spring	1	302__	Blade Guide #__	1
30006	Grooved Pin	1	302__	Anvil #__	1
30007	Spring	1	302__	Blade #__	1

* Tools with a "T" have a narrow clipping head. On those tools, Part #20037 (E-Clip) replaces Part #20012 (Nut) and Part #30041 (Pin) replaces Part #30023 (Shoulder Screw).

TOOL IDENTIFICATION

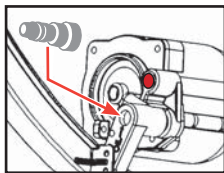


MODEL-SPECIFIC PARTS

Model	Anvil	Blade	Blade Guide	Magazine	Pusher w/Latch	Fits Clip Width
2000-__	302__	302__	302__	300__ (Green) 380__ (Black)	300__	
1020	10	20	02	50	51	A
1020S	10	20	03	50	51	A
1022	10	22	01	50	51	A
1024	10	24	08	50	51	A
1121	11	21	01	50	51	A
1234	12	34	54	50	51	A
1533	15	33	55	50	51	A
1929	19	29	03	50	51	A
3236	32	36	07	24	31	E
4139	41	39	09	24	31	E
4151T*	41	51	05	24	30	F
4157T*	41	57	04	24	30	F
6075	60	75	00-0	24	25	F, H
6080	60	80	00-0	24	25	F, H
6082	60	82	00-0	24	25	F, H
6181	61	81	00-0	24	25	F, H
6181T*	61	81	00-0	24	25	F, H
6183	61	83	00-1	24	25	F, H
6183T*	61	83	00-1	24	25	F, H
6185	61	85	00-0	24	25	F, H
6187T*	61	87	00-1	24	25	F, H
6189	61	89	00-1	24	25	F, H
6788	67	88	06	60	25	F, H
6791T*	67	91	06	60	25	F, H

* Tools with a "T" designation have a narrow clipping head, ideal for fishing/lobster pots, traps and cage assembly.

ECLIPSER 2000 OPERATING INSTRUCTIONS



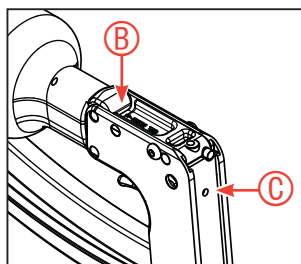
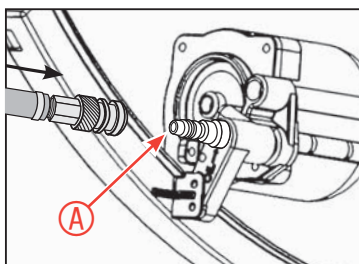
TO GET STARTED

Install a 1/4" NPT fitting (not included) into air inlet opening in the back of the housing, using suitable thread sealant. **DO NOT REMOVE RED PLUG LOCATED ABOVE THIS OPENING.**

RECOMMENDED DAILY MAINTENANCE

Add 2-3 drops of air tool oil (10-weight recommended) to air inlet hose fitting (A); and openings between the side plates at these two locations:

- in the gap at the back of the top plate and the housing (B)
- the opening on the front plate (C), as shown on affixed label

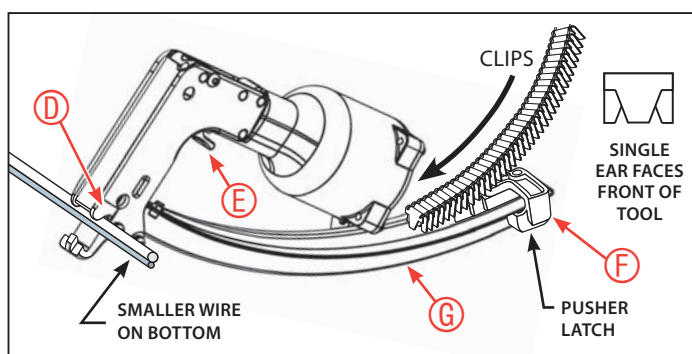


TOOL OPERATION

1. Connect air supply to air inlet hose fitting (A), keeping fingers and hands away from blade and anvil area. Recommended air supply is 80-90 psi (5.5-6.2 bars) of dry, lubricated air.

Eclipser air consumption (SCFM), assuming 90psi and 1 cycle per second, is 3.56. Assuming 80psi and 1 cycle per second, SCFM is 3.22.

2. Load clips into magazine.
3. Set wires to be fastened into side plate notches (D). For best results, smaller wire should be on the bottom. Squeeze trigger (E) to install clip.



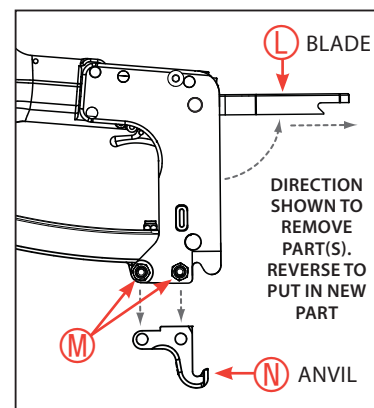
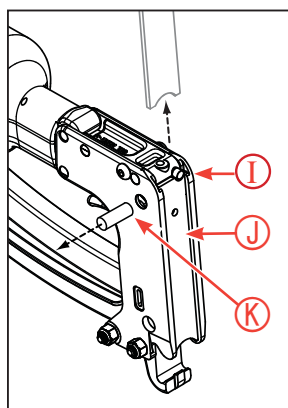
LOADING CLIPS

1. Pull pusher (F) back until it latches at the end of magazine (G).
2. Remove strip of clips from box. Load entire strip into magazine with the single "ear" facing towards the front of the tool.
3. Secure clips in place by depressing pusher latch on underside of magazine.

PARTS REPLACEMENT

BLADE: DISCONNECT AIR. REMOVE CLIPS FROM TOOL.

1. Depress pin (I) at top of front plate (J); slide plate up and remove.
2. Swing blade (L) from tool and align link pin (K) with holes in both side plates. Remove pin through holes and take out old blade.
3. Lubricate new blade.
4. With new blade at 90° angle, align blade hole with links (Part #30019) and side plate holes on both sides. Insert link pin (K) through aligned holes to secure blade. Firmly strike blade face to swing back into original position.
5. Re-lubricate front plate. Depress pin (I) and slide front plate down until pin is released, securing plate in place.

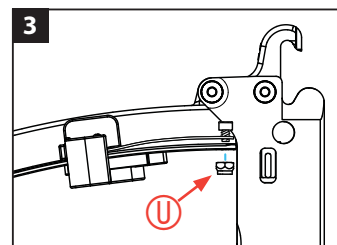
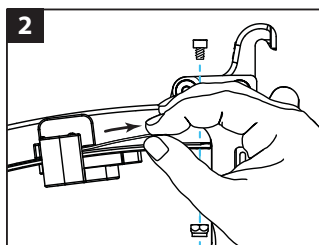
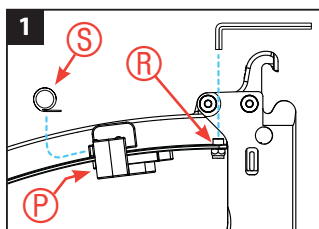


ANVIL: DISCONNECT AIR. REMOVE CLIPS FROM TOOL.

1. Remove lower shoulder screws (M) or pins/e-clips if tool is a "T" model.
2. Remove old anvil (N) and replace.

PUSHER SPRING: DISCONNECT AIR. REMOVE CLIPS FROM TOOL. For better access, turn tool upside down.

1. Loosen screw (R) with a 9/64" hex key and remove damaged pusher spring from magazine. Insert new spring (S) into back of pusher (P).
2. Pull spring out from pusher with fingers or by using the screw. Align the spring hole with the magazine screw hole. Insert screw and secure with nut (U). Be careful not to deform spring.
3. Pull pusher back and latch at end of magazine.



... Innovating Legendary Products

www.encorehartco.com • info@encorehartco.com
Northbrook, Illinois 60062 U.S.A.
Phone: (224) 723-5524 • Fax: (224) 723-5526